

# BRIDGE

Versatile sliding door system  
with splittable runner and guide profiles  
in patented Bridge® technology



# BRIDGE

Versatile sliding door system  
with splittable runner and guide profiles  
in patented Bridge® technology

## PROPERTIES

Wherever the optimisation of space usage plays a central role and a lot of storage space is needed, sliding-door wardrobes can successfully replace hinge-door wardrobes - and do so in a spacious, planar design.

**Bridge®** is an innovative hardware system for creating two-, three- and four-door sliding-door wardrobes as well as swing-sliding-door combinations. Door weights of up to 70 kg per door panel are possible.

The running and guide elements of the range are designed for smooth and easy running in all weight and size classes. The fitting complies with the requirements of DIN EN 15706 and is supplied in a compact cardboard box. In addition to the simple version with mechanical stopers, a dampened version is also available, whereby the damping system is packed separately.



## ADVANTAGES

- Optimum, smooth-running properties.
- The spring-loaded guide elements compensate for height tolerances of up to 14 mm.
- The spring-loaded guide elements significantly simplify the assembly of the wardrobe doors.
- Splittable upper runner and lower guide profile without changing the running characteristics.
- Better shipping options due to smaller packages.
- Online sales are possible due to the smaller packages.
- Combinations of sliding and revolving doors can be realised.

## VARIANTS

### FROM COMFORTABLE TO ESSENTIAL

With our patented **Bridge**<sup>®</sup> fitting, the focus is on a high level of comfort now usual on moving parts such as doors, flaps or drawers, as well as on the highly developed damper technology.

Side and centre doors can be equipped with this damper technology.

Those who wish to dispense with the damper technology can also use the low-cost version with end stops and a middle door locking device.



### DOOR THICKNESSES FROM 12 TO 20 MM

Two versions of the running and guiding elements are available.

This allows door thicknesses from 12 to 20mm to be realised.

Smooth continuous thin fronts, fronts with mirroring and solid fronts with a respective maximum weight of 70kg can be implemented with the corresponding runner and guide elements.

Other door thicknesses can be checked individually on request.



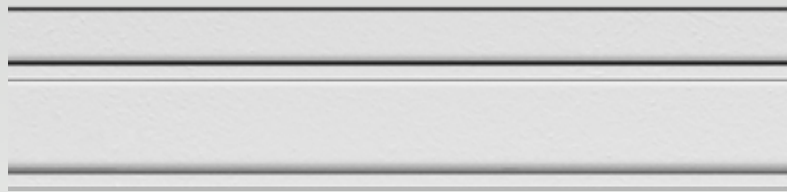
### PLINTH HEIGHTS OF 32 AND 64 MM

Both the cabinet design and the front look are influenced by the plinth height. The system components of Bridge<sup>®</sup> technology cover the two standard plinth heights of 32 and 64 mm. The same guide rail is used for both plinth heights.



# BRIDGE

Versatile sliding door system  
with splittable runner and guide profiles  
in patented Bridge® technology



## EXECUTIONS

### TWO-DOOR SLIDING DOOR FITTING

The two-door version allows both a compact construction and a generous design with large wardrobe widths and visually very large surfaces. In this way, storage space is optimally used even in smaller areas.



### THREE-DOOR SLIDING DOOR FITTING

The classic, three-door design allows both a continuous look and a flexible design of the fronts. A floor-to-ceiling, central mirror as well as completely mirrored fronts are popular variants.



## EXECUTIONS

---

### **FOUR-DOOR SLIDING DOOR FITTING WITH CENTRAL SYNCHRONOUSLY OPENING DOORS**

The highlight of this very contemporary design is the central, centre-split door panel. Thanks to the built-in synchronous technology, it opens effectively to both sides simultaneously when a door portion is activated.



### **NUMEROUS COMBINATIONS OF SLIDING DOORS, REVOLVING DOORS & DRAWERS**

Today, the most diverse things need to be stored optimally. The opening and access options of wardrobes have also adapted to this. Our customers can choose between hinged doors, directly accessible drawers and sliding doors that combine practical functions with a perfect look. The sliding wardrobe remains the practical and compact alternative to the walk-in wardrobe.



# BRIDGE

Versatile sliding door system with splittable runner and guide profiles in patented Bridge® technology

## ACCESSORIES

### MIDDLE DOOR DAMPER

No matter from which side the centre door is operated - it is damped into the centre position and held there.



### FINAL DAMPERS

When the door is closed, it is pulled over a length of 70 mm into the end position and fixed there. The end position damper can also be used to dampen the middle doors of synchronous cabinets.



### MECHANICAL MIDDLE DOOR LOCK

If soft-closing of the doors is not desired, the mechanical centre door locking device ensures locking and positioning of the door when manually accompanied by the user.



### MECHANICAL END STOP WITH LATCH

The door is moved manually to the end position when closing. The latching clasp ensures the locking and positioning of the closed door. The slot cover conceals the unused clearance for the end position damper.



## STRENGTHS HIGHLIGHTS

### SPLITTABLE UPPER RUNNING PROFILE

The possibility of separating the runner profile at one or more points is an absolute highlight. This means that packaging and logistics of very large rows of cabinets are no longer a problem. The transition from one side of the track to the other is smooth and silent.



### SPLITTABLE LOWER GUIDE PROFILE

In addition to the top profile, there is also the option of separating the profile at the bottom of the guide rail without having to forego the usual convenience. This offers extensive possibilities for optimising packaging and shipping.



### CHARIOT WITH ACTIVATOR & ANTI-LIFT DEVICE

The running fittings of the **Bridge**® series are equipped with corresponding activators for engaging the damper mechanism and the mechanical latching clasp. They have a convenient anti-lift device as standard.



### SPRING-LOADED GUIDE ELEMENT REAR DOOR

The roller holders of the lower guide elements, equipped with retractable springs, have two major advantages: compensation of height tolerances of up to 14 mm and easiest lean-in assembly of even the heaviest doors.



### END FITTING FOR PASSEPARTOUT FRAMES

A wrap-around frame to visually enhance sophisticated sliding-door wardrobes is en vogue. Fitted with lights, they enhance this aesthetical solution enormously. An extended end-stop clears the handle area between door and frame.



### GAP ADJUSTMENT FOR SYNCHRONOUS DOORS

Visually, synchronous doors are an absolute highlight when the gap between the two middle doors is even. For very wide wardrobes and uneven floors, the integrated height adjustment helps to regulate the gap between the doors.



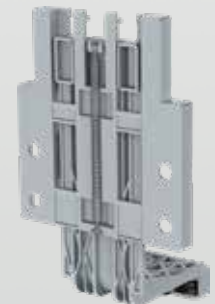
### SUPPORT BRACKET

To increase stability and thus also the possible door weights, support brackets are located laterally under the guide profiles. This absorbs the tensile load on the profiles laterally as well.



### SPRING-LOADED GUIDE ELEMENT FRONT-RUNNING DOOR

The swinging arms of the lower guide elements, equipped with springs, have two major advantages: a compensation of the height tolerances of up to 14 mm and easiest lean-in assembly of even the heaviest doors.



# BRIDGE

Versatile sliding door system with splittable runner and guide profiles in patented Bridge® technology

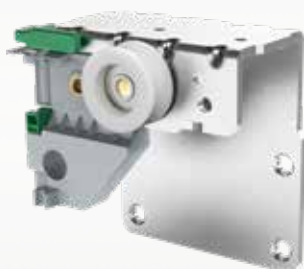
## COMPONENTS



### Chariot for front-running door with adjusting lever and guard locking

Use with all versions

- Available in two different sizes
- Mirrored image versions available



### Chariot for front-running door with activator and adjusting lever

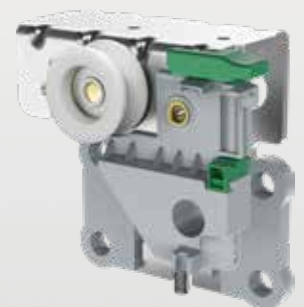
Use with all versions where the front-running door is pulled into the latching clasp or the end-position damper.

- Available in two different sizes
- Mirrored image versions available



### Chariot / part front-running and rear-running door

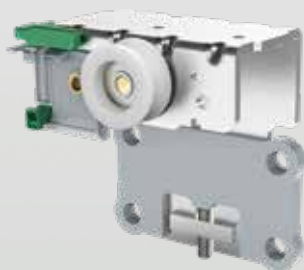
- Use with all variants where the door weights exceed 50 kg.
- Is mounted as an additional fitting in the centre of the door.



### Chariot for front-running door with activator and adjusting lever

Use with Synchro or corner cabinets. The integrated height adjustment allows the door gap to be set.

- Available in two different sizes
- Integrated height adjustment



### Chariot for front-running door with adjusting lever and guard locking

Use with Synchro or corner cabinets. The integrated height adjustment allows the door gap to be set.

- Integrated height adjustment



### Chariot for rear-running door with activator, locking and door on door stop (TaT)

Used on all versions where the front-running door meets the rear-running door. The TaT stop intercepts the movement of the front-running door.

- Mirrored image versions available



### Chariot for rear-running door with activator and lock

Use with all versions

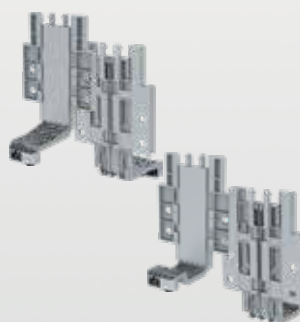
- Mirrored image versions available



### Guide part for rear-running door with spring-loaded roll holder

Use with all versions

- Compensates for tolerances in the system
- Simplifies the assembly of the door



### Guide part for front-running door with spring-loaded swing arm

Use with all versions

- Compensates for tolerances in the system and simplifies the assembly of the door
- Various assemblies for 64 and 32 sockets respectively.



### Centre door stop

Use with three-door wardrobes without central soft-closing mechanism

- Used for central positioning of the front-running door.

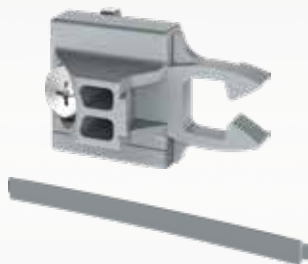




### Support bracket

Use with all versions

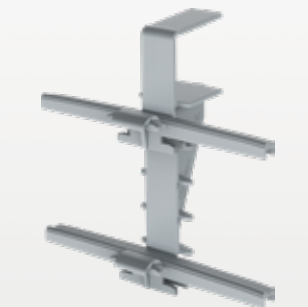
- Serves to stabilise and laterally support the running rail.



### End stop with latching clasp and slot cover

Use with all versions without damper function

- For fixing the doors in the end position
- End stop also available as passepartout version.
- The slot cover conceals the clearance for the end position damper.



### Connector for the running rail

Use with all versions if a separation of the running profile is planned

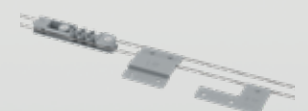
- Optimises the packaging of the furniture
- For noiseless connection of the individual segments.



### Connector for the lower guide rail

Use with all versions if a separation of the running profile is planned

- Optimises the packaging of the furniture
- For noiseless connection of the individual segments.



### Synchronisation elements

Use with four-door version with synchronisation of the front doors

- Cable unit and pulleys are used to move the front door panels simultaneously.



### Centre door damper

Use with three-door versions

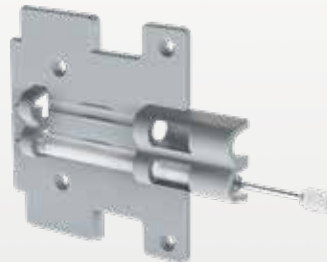
- The front-running door is gently pulled into position.
- The front-running door is damped/positioned from both sides.



### End position damper with end stop

Use with all damped versions

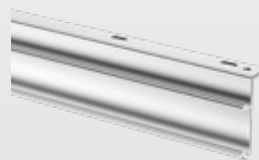
- Damping of the door over 70 mm.
- The door is held in the end position.
- Can also be used on synchronous wardrobes to dampen the centre doors.



### Door on door damper

Use with two-door wardrobes

- Serves to dampen when the doors move towards each other.



### Top track

Use with all versions

- The top track fits all carriages.
- It can be separated into several segments for packaging and transport optimisation thanks to **Bridge®** technology.



### Lower guide rail

Use with all versions

- The lower guide rail fits all guide parts.
- It can be separated into several segments for packaging and transport optimisation thanks to **Bridge®** technology.

# BRIDGE

Versatile sliding door system  
with splittable runner and guide profiles  
in patented Bridge® technology

## COMPANY BENEFITS

### PRODUCTION ADVANTAGES

The **Bridge®** system was developed to meet the requirements of leading manufacturers of sliding door wardrobes.

The solidity of the finished wardrobe and a standardised design with cost-optimised wardrobe elements are nowadays a must in order to be competitive in the international market of large sliding door wardrobes.



### LOGISTIC ADVANTAGES

The development of the **Bridge®** system came about due to the rapid increase in online sales of furniture, up to large sliding door wardrobes. The biggest handicap so far has been the logistics and shipping of the long runner and guide profiles.

Due to the patented **Bridge®** technology for the realisation of splittable profiles without any change in the running and guiding comfort, the system represents an extraordinary advantage of the technology.

Thus, running and guiding profiles can now be shipped to customers in compact packages.



### ASSEMBLY ADVANTAGES

Large sliding-door wardrobes always pose a challenge - whether for professional fitters or interested do-it-yourself customers. The system parts are easy to fix, the doors are easy and intuitive to assemble and tolerances and gaps can be adjusted quickly.

This guarantees satisfied fitters and enthusiastic customers. The quality components in automated production earn the seal of quality **MADE IN GERMANY**.



## VISION & MISSION

Functionally well-equipped furniture in a modern design at all price levels - this is what customers expect from the furniture industry and its suppliers today.

Rennerich has made it its business to help fulfil this expectation with smart and sustainable solutions at the right price.



## PRODUCTION

A production hall built especially for the production of this product range is part of the entire Rennerich company, where millions of linear metres of roll-formed furniture accessories such as cabinet tubes, sliding door profiles, construction profiles and much more are produced every year with over 90 employees in two plants on a total of 12,000 square metres of production space.

State-of-the-art, automatic systems for punching, roll forming and packaging ensure the best in Claas performance.

## QUALITY ASSURANCE

The company's quality management meets today's high requirements: Quality is lived by the entire team. Tight and efficient organisation, efficient state-of-the-art equipment and clearly defined processes throughout the company ensure the highest fulfilment rates in terms of quality consistency and adherence to delivery commitments.



# COMPETENCIES

## Wardrobe tubes

The wardrobe tubes **Oval** ensure order in every wardrobe. They can be found at leading manufacturers in Germany and worldwide.



## Sliding door systems

**Bridge** and **Overslide** create quick and practical access to modern sliding door wardrobes.



## Handle bars

The **Grip** range of handles from Rennerich impresses with its wide variety of models, diverse and high-quality surface selection, high consistent quality and customised solutions.



## Construction bars

**Rigidbar** and **Quickbar** are innovative solutions for the upper cross-connection of kitchen and bathroom base units. Compact, stable and also available as a tool-free version, they are the ideal braces for assembled and self-build base units.



## Roll forming technology

Over a decade of experience in roll-forming steel products makes Rennerich an indispensable partner for roll-formed mass products in the furniture sector and beyond.



## Stamping technology

Stamped parts made of steel - from simple angles to more complex parts - are part of the company's core competence. Since the company was founded, it has not only manufactured articles for the furniture industry, but also for customers from outside the industry.



## Rennerich GmbH

Otto-Hahn-Straße 19- 33161 Hövelhof - Deutschland

Tel: +49 52 57 98 41 - 0 - Fax: +49 52 57 98 41 - 41

E-Mail: [info@rennerich-gmbh.de](mailto:info@rennerich-gmbh.de)

Web: [www.rennerich-gmbh.de](http://www.rennerich-gmbh.de)