

GRIP

Ergonomic and cost effective sliding door handle



GRIP

Ergonomic and cost effective sliding door handle

FEATURES

Grip is an ever-growing range of handle bars specifically developed for modern sliding door wardrobes. The variety of shapes and the sober design of these handle bars are in line with modern wardrobe conception. There are versions for doors from 10mm up to 19mm thickness and ensure a compact construction of sliding door wardrobes with no handles sticking out and disturbing during opening and closing. The good **Grip** has given the name to the range, despite low built-up on the edge of the cabinet door. The range is available in different finishes and the products can be fitted with the fixing holes required by the customer during the production process. The products can be easily packed together with the panels in the flat-pack furniture box.



BENEFITS

The profiling based on roll forming technology generates a stable and stiff construction. The **Grip** range stands out with many features and benefits:

- *Cost optimised shaping and sustainable use of material*
- *Ergonomic Grip zone*
- *Ease of assembly*
- *Fitting for many door thicknesses – beside the standard size, every model is available for different door thicknesses on request*
- *Many standard finishes are available and special finishes are possible on request*
- *Precision of the product to the millimetre*
- *Optionally, the handle bar can be fitted with a protective film for care during handling, packaging, transport and assembly*
- *Products can be packed according to customer specification.*

Grip is the leading range of handle bars for modern wardrobe sliding doors.

AVAILABLE MODELS

Functional Dimensions

The **Grip** range covers currently 9 different sections. More traditional design like Ulf or Kim or modern design like Ralf are available to equip all kinds of wardrobe design.

In case you are looking for a specific shape, we can realise your special model to your specifications.

Length

Grip handle bar are produced to measure. You define the length and the eventual position of the fixing holes and we deliver the ready-to-assemble product to you.



Ulf



Paul



Amy



Britt



Jacky



Kim



Lena



Max

FINISHES

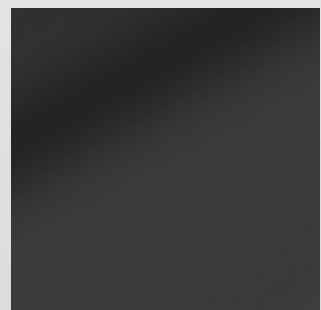
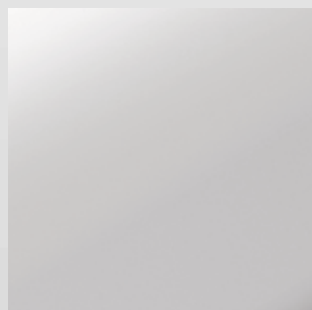
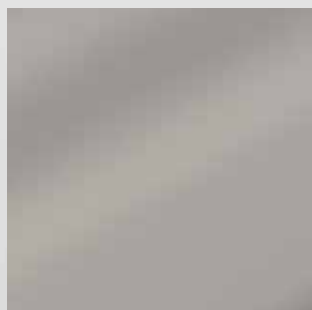
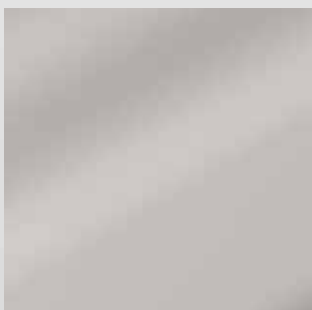
Grip handle bars are produced with high quality pre-coated steel material, to ensure a constant quality and a constant finish and colour.

The different standard finishes available for the **Grip** range are: **zinc plated, tough grey, stainless-steel-look, alu-look, silver, havanna, white, black.**

Upon request and subject to extra charge, other colours and finishes are available.



Ralf



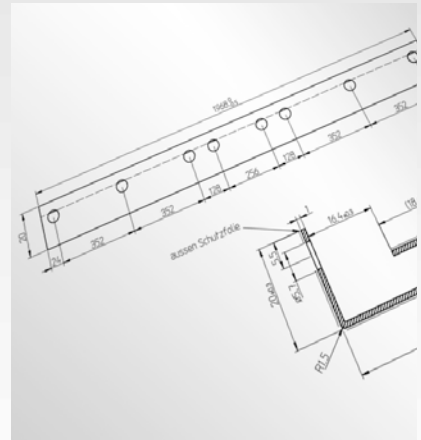
FIXING VARIANTS

Each section of the different designs can be made with variations of the dimensions. For small quantities, these special productions are made on our automatic bending machines.

For larger quantities and guaranteed purchasing volumes, we can realise the adequate roll-forming tooling to achieve optimised pricing in the production process.

For specific requests, we can also develop for you an exclusive design produced only for your company.

Based on your conceptual design, we establish a roll formable version of the product and can produce it on our automatic bending machines or on our roll forming equipment.



VARIANTS/EQUIPMENT

Fixing

Grip handles are supplied as standard with fixing holes for invisible fastening to the door from the back. The handle bars can therefore be used without further intervention directly in the production process or can be packaged with flat-pack furniture components for end-consumer assembly.

With adequate routing of the door outer or/and inner surface, **Grip** handle bars can also be fixed tool less or with self-adhesive strips.



Protective foil

To protect the high quality surface of the handle bars during the production process, transport and assembly against scratches, **Grip** handle bars can be fitted with extra charge with protective peel-off foils, which can be removed easily, once the production, transport or installation process is over.



Packaging

Depending on the usage of the **Grip** handle bar, the products can be packaged to optimise transport costs, to reduce assembly time in factory or to simplify the by-packing of the product in the flat-pack packaging process.

Products can also be combined with our sliding door profiles as set, which can also be simply by-packed to the furniture components in the flat-pack cardboard box.



VISION & MISSION

Functionally well-equipped furniture in a modern design at all price levels - this is what customers expect from the furniture industry and its suppliers today.

Rennerich has made it its business to help fulfil this expectation with smart and sustainable solutions at the right price.



PRODUCTION

A production hall built especially for the production of this product range is part of the entire Rennerich company, where millions of linear metres of roll-formed furniture accessories such as cabinet tubes, sliding door profiles, construction profiles and much more are produced every year with over 90 employees in two plants on a total of 12,000 square metres of production space.

State-of-the-art, automatic systems for punching, roll forming and packaging ensure the best in Claas performance.

QUALITY ASSURANCE

The company's quality management meets today's high requirements: Quality is lived by the entire team. Tight and efficient organisation, efficient state-of-the-art equipment and clearly defined processes throughout the company ensure the highest fulfilment rates in terms of quality consistency and adherence to delivery commitments.



COMPETENCIES

Wardrobe tubes

The wardrobe tubes **Oval** ensure order in every wardrobe. They can be found at leading manufacturers in Germany and worldwide.



Sliding door systems

Bridge and **Overslide** create quick and practical access to modern sliding door wardrobes.



Handle bars

The **Grip** range of handles from Rennerich impresses with its wide variety of models, diverse and high-quality surface selection, high consistent quality and customised solutions.



Construction bars

Rigidbar and **Quickbar** are innovative solutions for the upper cross-connection of kitchen and bathroom base units. Compact, stable and also available as a tool-free version, they are the ideal braces for assembled and self-build base units.



Roll forming technology

Over a decade of experience in roll-forming steel products makes Rennerich an indispensable partner for roll-formed mass products in the furniture sector and beyond.



Stamping technology

Stamped parts made of steel - from simple angles to more complex parts - are part of the company's core competence. Since the company was founded, it has not only manufactured articles for the furniture industry, but also for customers from outside the industry.

